

## 5X4 OGEE EXTRUDED GUTTER

### MECHANICAL PROPERTIES

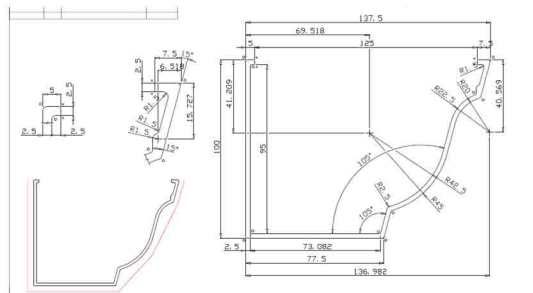
Yield Strength: 230Mpa  
Tensile Strength: 280Mpa

### PHYSICAL PROPERTIES

Density: 2,70KG/DM<sup>3</sup>  
Modulus of Elasticity: 70GPa  
Thermal Conductivity: 172W/m.c  
Coefficient of Thermal Expansion: 23.1 X 10<sup>-6</sup>/°C  
Electrical Resistivity at 20°C: 44% IACS  
Melting Range: 575°C - 650°C

### COMPOSITION

	MIN	MAX
Si	0.70	1.30
Fe		0.50
Cu		0.10
Mn	0.40	1.00
Mg	0.60	1.20
Cr		0.25
Zn		0.20
Ti		0.10
Other Elements	0.05 each	0.15 Total



### Materials:

Aluminium profiles are extruded from aluminium alloy 6063 T5 and T6 complying with:  
BS1474 – BS EN 12020-2:2001 / BS EN 755-9:2001

### Paint finishes (Polyester Powder Coatings):

Aluminium profiles can be dual colour polyester powder coated to BS6496. AMS offers in house painting with the following paint suppliers:  
Azko Nobel Interpon D,  
Du Pont Alesta,  
Beckers Powder

### MANUFACTURER:

ALU-CAST ENTREPRISES LTD  
Unit 2 - Corbally Industrial Estate, Kanturk, Co. Cork  
tel: 029-50234/0872550340  
fax: 029-51226  
email: info@alucast.ie  
web: www.alucast.ie

### PRODUCT:

Heritage Round Downpipes available in 75mm or 100mm dia and 2 or 3 mtr lengths.  
Product Code: ACCRP3/C/-, ACCRP4/C/-

### MATERIAL:

Marine Grade Extruded Aluminium to BS EN755-9:2001 / BS EN 12020-2:2001, Aluminium alloy 6063 to T5, T6 temper grade.

### GAUGE:

2.0mm wall thickness

### SIZE:

130mm width, 95mm depth

### CAPACITY:

3.68 litres/sec (The flow capacity of ALU-CAST gutters are based on a rainfall rate of 75mm/hr, the gutter being laid nominally level. Our figures are based on an end outlet position.)

### FINISH:

Mill Finish or Polyester Powder Coated (BS EN12206-1: 2004) to selected RAL colour

### FIXING METHOD:

Extruded Fascia Brackets at maximum 1.0m centres. 2 no fixings, (No.5x50mm twin threaded stainless screw) per bracket

### JOINTING:

Internal joiner / wet seal jointing and sealed with recommended Low Modulus Sealant.

### ACCESSORIES:

Angles, Outlets, Stop Ends to be supplied by same Manufacturer.

\*Materials to be installed strictly in accordance with manufacturer's instructions

### AQUA-FLO ALUMINIUM GUTTER RANGE

The AQUA-FLO range of extruded aluminium gutters are available in 3 profiles and 8 sizes. They are designed to provide flush fitting pipes with a modern, clean look. The range is ideally suited for projects seeking to have their rainwater system enhance the overall architectural design of the building.

### APPLICATION

- Specifically designed for modern contemporary buildings seeking to have a robust rainwater discharge system with high aesthetic.
- Concealed jointing (internal joiner) and fixing with external fascia bracket or direct fix (Moulded OG Profile)
- A clean contemporary aesthetic.

### PERFORMANCE

- Low maintenance life expectancy of 40yrs
- Coefficient for thermal expansion – 0.000023degC
- Do not aid combustion
- Melting point approximately 660C

### INSTALLATION

- Easy installation with snap fit internal joiners (Low Modulus Sealant)
- Bespoke brackets manufactured to suit design ( Outlets, Angles, Stop Ends all manufactured to suit profiles)
- Faceted and True Radius Gutters sections available to design templates

### MATERIAL

- Extruded Aluminium to BS EN755-2:2008. Aluminium alloy 6063 to T6 temper grade
- Lightweight, durable and non-corrodible (under normal atmospheric conditions)
- 100% recyclable

### PROFILES/SIZES

- Half Round – 125mmØ, 150mmØ
- Moulded OG – 101x75mm, 125x100mm, 150x100mm

### FINISHES

- Polyester Powder Coated Finish
- Full RAL colour ranges / Mill Finish